

Contents

Welcome To Use.....	2
Product Features.....	2
Packaging & Accessories.....	3
Technical Specifications.....	4
Product Structure.....	5
Use Introduction.....	6
1.Install battery.....	6
2.Battery charging.....	7
3.Power on / off.....	7
4.Use digital video magnifier.....	8
Functions Introduction.....	9
1.Color mode switch.....	9
2.Zoom rate adjustment.....	10
3.Image freeze and unfreeze.....	10
4.Auto focus function (Optional).....	10
5.Reading line (Optional).....	11
6.Flashlight.....	11
7.Memory function.....	12
8.Power saving.....	12
9.Low battery tips.....	12
10.Handwriting bracket.....	13
11.Connecting to TV.....	13
Menu Introduction.....	14
Computer configuration requirements.....	15
Precautions.....	15
Problem solutions.....	16

Welcome to use

Thank you for your choice of our company portable digital video magnifier!

Please read and keep this manual carefully. It will help you to use the magnifier better and achieve the best magnified effect.

Product Features

This Full HD 4.3 inch portable digital video magnifier is our company grand launch with high performance and high cost-effective performance.

- 720P60 design, no lag, no smear, fluent HD;
- 4.3 inch large anti-glare screen, 480*272 resolution, high definition and high lighting;
- Professional image processing DSP to restore colors and details really;
- Intelligent image enhancement algorithm; Adapting to image scene intelligently and reproducing details after zooming in;
- Custom-made high-end lens, large filed angle and extended depth of field, more text and continuous reading;
- Lens center design is more in line with the normal use habit;
- 2X-32X infinite amplification, clear and smooth;
- Auto focus design, far and near scenes are equally same clear (optional);
- Ultra-thin shape for easy carrying; Zero distance design, comfortable to use;
- Convex color button design, high contrast and clear touch feeling;
- Using ergonomic foldable handle design, comfortable reading and fluent handwriting;
- 26 color modes to meet different people's need;

- Color mode customization function, any combination of enhancing mode, personalized custom;
- Picture freeze, convenient to take a close look;
- Reading line function and auxiliary continuous reading text (optional);
- Voice prompt function is simple and easy to use for the visually impaired;
- Large icon user interface, clear and concise;
- Backlight adjustable, comfortable eye protected; White LED light brightness adjustable and closed, suitable for reading mobile phone, tablets and other reading materials;
- Memory function can automatically save the user all the last settings and remember the user's habits;
- AV connecting to HD TV to provide greater and clearer visual effects;
- TYPE-C USB interface is available, both positive and negative inserts are available;
- Support external headphones, avoid voice prompt to affect the surrounding environment;
- Flashlight can supply temporary lighting;
- Large capacity re-chargeable battery, ultimate power-saving and 4 hours runtime;
- Intelligent power-saving design; Automatic shut-down after the screen is static and no operation for 3 minutes ; Environmental protection and energy conservation;

New algorithm, new design and new configuration will bring you smooth, high-definition, portable new experience!

Packaging accessories

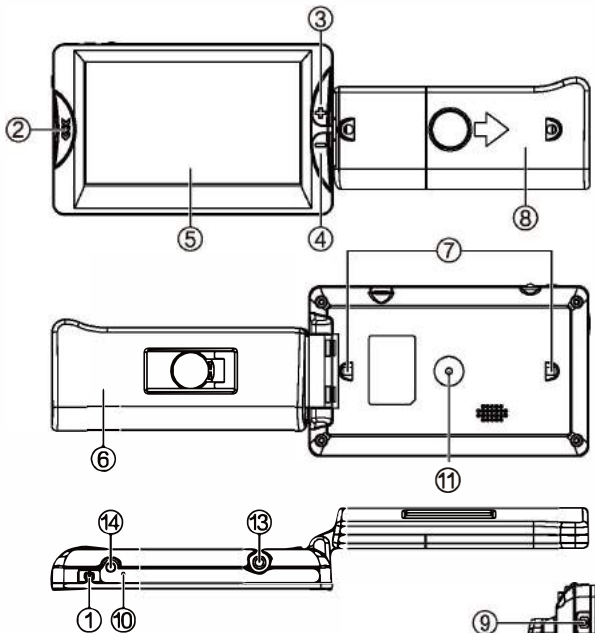
- | | | | |
|--------------------------|-----|------------------|-----|
| ●Digital video magnifier | 1PC | ●Lithium battery | 1PC |
| ●USB charging cable | 1PC | ●Protective case | 1PC |

●Video output cable	1PC	●User manual	1PC
●Power adapter	1PC	●Cleaning cloth	1PC

Technical specifications

- Screen size: 4.3 inch colorful LCD screen(480X272)
- Pixel size: 1 mega pixels (720P60)
- Zoom rate: 2X to 32X infinite amplifying
- Auto focus: automatic, manual (optional)
- Color mode: 26 kinds
- Mode custom-made: Support
- White LED adjustment: Support
- Brightness adjustment: Support
- Memory function: Support
- Image freeze : Support
- Reading line: Support (optional)
- Flashlight function: Support
- Folding handle: support
- TV output: Support AV
- Headphone output: Support 3.5mm headphone
- Power saving: Support
- Low battery tips: Support
- Voice prompt: Support
- Handle function: Foldable handle, support handwriting
- Working hours: last over 4 hours continuously
- Battery capacity: 1500mAH high-capacity chargeable lithium battery
- Charging function: USB TYPE-C DC5V1A
- Dimension: Handle open, 238mm (L) x 76mm (W) x 17.5mm (H)
Handle closed 123mm (L) x 76mm (W) x 39mm (H)
- Weight: 210g(Battery included)

Product Structure

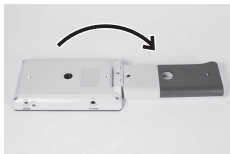


- | | |
|-------------------------------|-------------------------|
| 1.Power button / Focus button | 8.Battery compartment |
| 2.Mode button | 9.Freeze button |
| 3.Zoom in button | 10.Reset key |
| 4.Zoom out button | 11.Lens |
| 5.Display screen | 12.USB Type-C interface |
| 6.Handle | 13.AV interface |
| 7.White LED | 14.Battery indicator |

Use introduction

1.Install battery

- Invert video magnifier and open the handle;



- Hold the battery cover and push the cover towards edge to open;



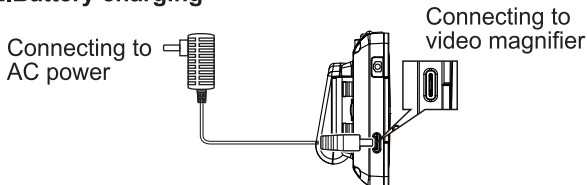
- Plug the dedicated battery into the battery holder and push the battery into the battery compartment;



- Cover the battery box, sliding in place when hearing the "click" sound.



2. Battery charging

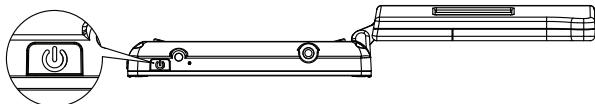


- Connecting video magnifier to adapter by USB TYPE-C cable;
- Connecting adapter to AC power;
- Charging light (red light) is on when charging;
- Charging light (red light) will be off when complete charge;
- Please charge the battery to full at the first time using;
- When low battery tips, please charge the battery in time.

Attention:

In the charging process, please keep the charger and the video magnifier have good heat dissipation and ventilation, so as to avoid danger caused by overheat.

3. Power on/off



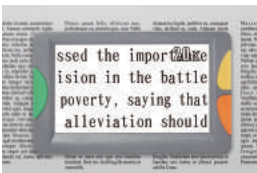
Power button

- Keep pressing **power button** for 3 seconds while the power is off, the video magnifier will turn on, and the green indicator lights up, and video magnifier enters the vision aid mode.
- Aim the lens focus at the reading target;
- Optimal reading effect can be attained through adjusting magnifying power, enhanced mode, locking picture and the like operations;
- Keep pressing **power button** for 3 seconds while the power is on, the video magnifier will turn off;

Attention :

For best results, remove the protective film from the LCD and lens goggles before using.

4. Use digital video magnifier



Reading under handle closed



Reading under handle open

The video magnifier has a folding handle, which can be closed and placed directly on above reading materials to use; Or open the handle, make the center of the screen is used to face the reading materials after the handle is held by one hand.

Close handle to make the magnifier and the desktop into a corner, ergonomic. When reading, the neck is in natural status, relaxed and comfortable.

Color mode switch: Press **mode button** to switch color mode;
 Zoom in and out: Press **zoom in button** to enlarge image and press **zoom out button** to shrink image.

Freeze and unfreeze image: Press **freeze button** to freeze image and repress freeze button to unfreeze image.

For more details, please refer to the chapter on function introduction and menu setting.

Functions Introduction

1. Color mode switch

Switch the LCD screen image enhancement mode by **mode button** to meet different needs.

26 kinds of image enhancement modes:

- | | |
|---------------------------|---------------------|
| 1) Color mode | 14) White on green |
| 2) Color enhancement mode | 15) Orange on white |
| 3) Negative mode | 16) White on orange |
| 4) Monochrome mode | 17) Red on black |
| 5) Black on white | 18) Black on red |
| 6) White on black | 19) Orange on black |
| 7) Blue on white | 20) Black on orange |
| 8) White on blue | 21) Yellow on green |
| 9) Yellow on black | 22) Green on yellow |
| 10) Black on yellow | 23) Red on white |
| 11) Yellow on blue | 24) White on red |
| 12) Blue on yellow | 25) Yellow on white |
| 13) Green on white | 26) White on yellow |

The desired **color mode** can be customized by menu setting -> **color mode**, details see **color mode** setting section.

2.Zoom rate adjustment



2X Amplifying



16X Amplifying



32X Amplifying

By **zoom in** or **zoom out** button, adjusts zoom rate to achieve the best magnifying effect.

This magnifier can **zoom in** or **zoom out** infinitely between 2X~32X.

3.Image freeze and unfreeze



Freeze image after viewfinder



Watching image after freezing

Freeze button can freeze image and can observe the image at close distance, which is not easy to watch before freezing;
Repress **freeze button** to unfreeze image and recover real-time view.

4.Auto focus function (optional)



Auto focus



Manual focus

This video magnifier has auto focus function, long press **freeze button** to switch auto focus and manual focus.

Auto focus: Real-time focus according to scene changes; Or short press **power button** to forced focus;

Manual focus: Can lock current focal distance, when short press **power button**, manual focus icon will flash, then adjust focal distance manually by **zoom in** and **zoom out buttons**;

This function is only valid for AF version.

5. Reading line (optional)

Reading lines can help text positioning to help users read quickly and continuously.



Horizontal reading line Vertical reading line Turn off the reading line

Long press **freeze button** to switch horizontal reading line, vertical reading line and close the reading line.

Moving reading line: When the reading line is flashing, the reading line is moved by pressing **zoom in button** and **zoom out button**.

This function is only valid for AF version.

6. Flashlight

Flashlight plays the role of temporary lighting for video magnifier.

Turn on flashlight: under off status, keep pressing **freeze button** and then press **power button**, flashlight is on.

Mode switch: By **freeze button** to switch bright, slow flash, flash, gradient and close.

Brightness adjustment: **Zoom in button** or **zoom out button** can brighten or dim flashlight brightness (except for the gradient mode)

Turn off flashlight: Long press **power button**, and flashlight will be off.

7.Memory function

After turning off, memory function can save the user all the last settings automatically and remember the user's habits;

8.Power saving

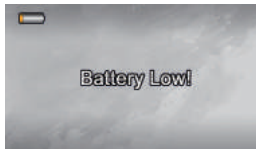
This video magnifier has intelligent power saving function. When no key operation and the screen rests for 1 minute, it will enter the sleep state automatically and the screen shows the battery power and the current date and time.



Automatic sleep

Under sleep status, pressing any key to wake up magnifier. No operation after 2 minutes, it will shut down automatically to save power.

9.Low battery tips



Low battery tips

Low battery tips function: Screen will display the low power icon at low battery, and the power light flashes.

When low battery tips, please charge the battery in time.

10. Handwriting bracket

The video magnifier supports handwriting function. Open its handle and write.



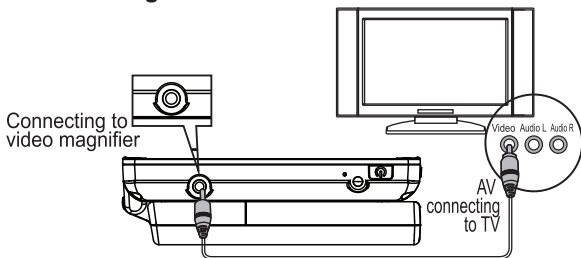
Single hand hold handle to write



Open handle upright to write

Rotate the magnifier 180 degrees for left hand writing.

11. Connecting to TV



Connect magnifier to TV by AV video cable to get a bigger, clearer displaying effect.

When the magnifier enters the video output mode, the LCD screen will turn off automatically.

Menu Introduction

Under menu open mode, the buttons are defined as follows:

Pressing button	Operation
Mode button short press	Next menu
Zoom in button	Previous menu
Freeze button	Option setting
Zoom out button	Next option
Mode button long press	Exit menu

Under preview mode, long press **mode button** to enter the setting menu for magnifier parameter setting.

LCD brightness adjustment: can adjust between 1 ~ 5 levels;

White LED brightness adjustment: can adjust between 0 ~ 5 levels, 0 level to turn off white LED, mainly for reading mobile phones, panel and texts on other self-luminous instruments;

Beep volume adjustment: can adjust between 0 ~ 5 levels, 0 level is beep off;

Date and time setting: can set current date and time;

Color mode setting: can choose the color mode what need to use, the color mode cannot be turned off;

Battery power display: current battery power will be displayed as a percentage;

Version information display: display the product model, firmware version number, and firmware compilation time;

Computer configuration requirements

This digital video magnifier requires the PC to meet the following requirements:

- Windows® Win7/Vista/XP operating system
- Intel® Pentium 4, 2.8 GHz CPU or above
- At least 1GB RAM or above
- Standard USB 2.0 or above
- 512MB or above video card

Precautions

In order to keep your digital video magnifier works in the best condition, please read the following notes carefully:

- Please do not expose it directly to high temperatures or sunlight.
- Please keep it away from moisture, rain, liquids and chemicals.
- Please do not use it near to electronic equipments, and medical equipments, which are not under insufficient shield.
- Please ensure that using it at temperatures between 10 ° C and 40 ° C.
- Please ensure that it is stored at temperatures between -20 ° C and 65 ° C.
- Do not try to repair or open the aids to avoid damaging warranty.
- Please use the matching power supply and battery, otherwise danger or loss will occur.
- Unplug power and remove battery before cleaning magnifier.
Use soft cloth to clean it, alcohol solvents or any other cleaners cannot be used.

Warning:

Do not use it during charging!

Problem solutions

Problem	Solutions
Black screen	Battery without power, charging it Make sure the lens focus on the reading materials
Cannot power on	Battery without power, charging it
No sound	Make sure if the volume at 1 to 5 in the menu setting
The image is too dark or too bright	Make sure the lens focus on the reading materials
Image is blurred or dirty	Wipe the LCD screen and lens goggles
Image is blurred	The lens is not in focus properly Manual focus mode, please adjust focal distance Auto focus mode, please move image or press focus button to refocus
Reading text is too small	To adjust zoom rate by pressing the zoom in button
Connected to the TV, but the TV is not shown	Make sure the TV is on When using the AV cable, switch the TV input to AV input Make sure the video cable is properly connected to the magnifier and TV